

Instructions for University of Melbourne Students and Staff: Connecting to eduroam with Mac OSX 10.4

NOTE: University of Melbourne students and staff cannot connect to eduroam when at the University of Melbourne

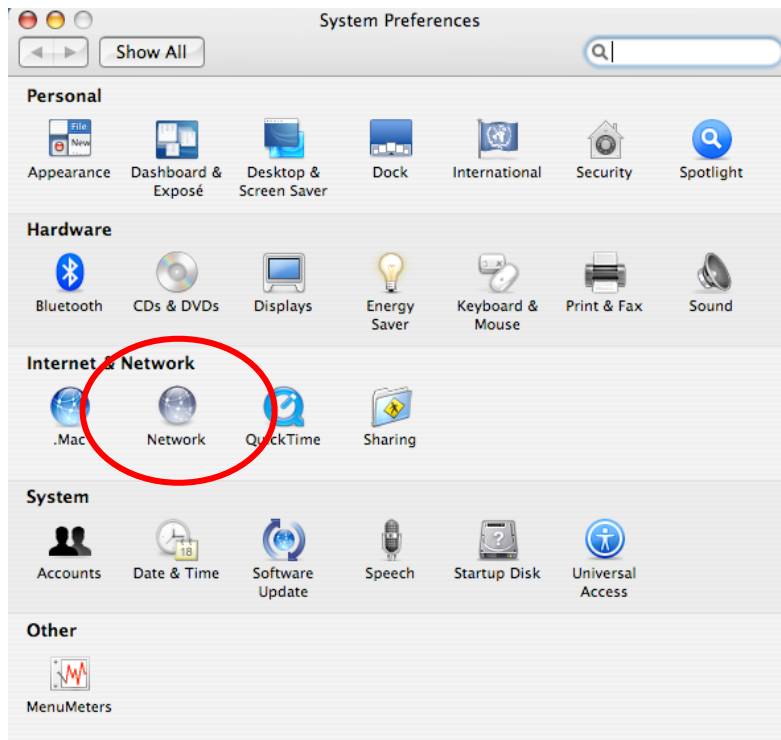
STEP 1:

From the **Apple** menu, select **System Preferences**



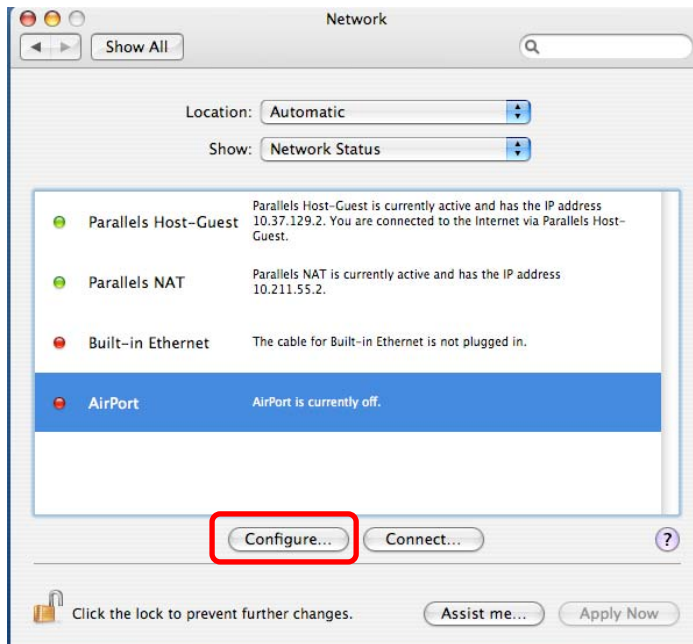
STEP 2:

Select the **Network** icon



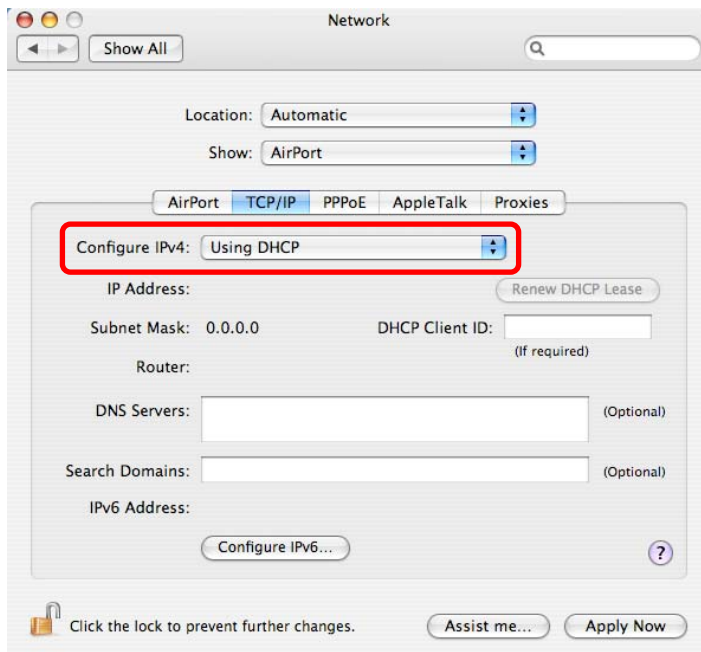
STEP 3:

Select the **AirPort** item and click the **Configure** button.



STEP 4:

Click on the **TCP/IP** tab near the top of the preferences page.

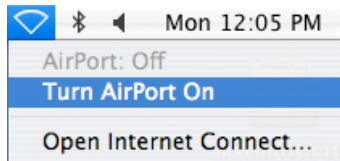


From the **Configure IPv4** drop down box select **Using DHCP**, click **Apply Now**, and then close **System Preferences**

If **Using DHCP** is already selected, close **System Preferences**.

STEP 5:

From the **Airport** menu at the top of your display select **Turn Airport On**, if it isn't already;



STEP 6:

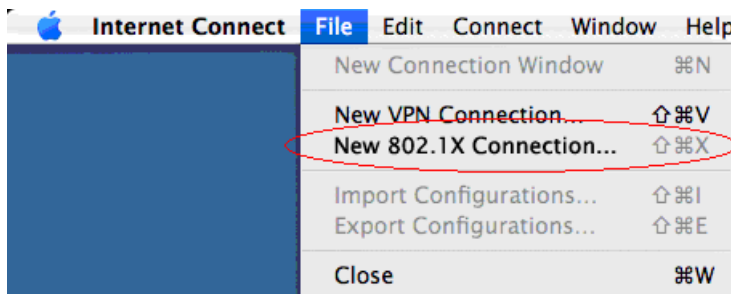
Open **Internet Connect**

From the **Airport** menu  select **Open Internet Connect...**

STEP 7:

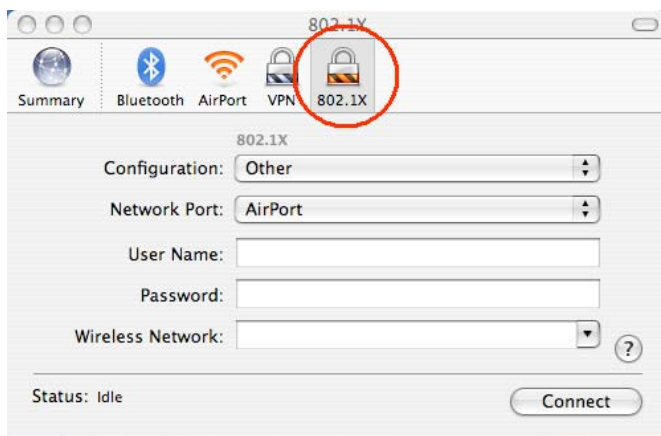
This step enables the 802.1x settings.

From the **File** menu select **New 802.1x Connection**. If this option is greyed out 802.1x is already enabled. Go to STEP 8.



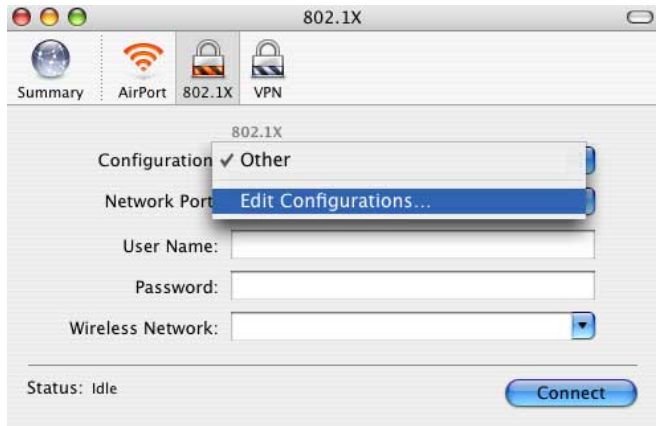
STEP 8:

Select the **802.1x** icon



STEP 9:

From the **Configuration** drop down menu select **Edit Configurations**.



In the **Configuration** that appears, enter the following:

Give the configuration an appropriate **Description**

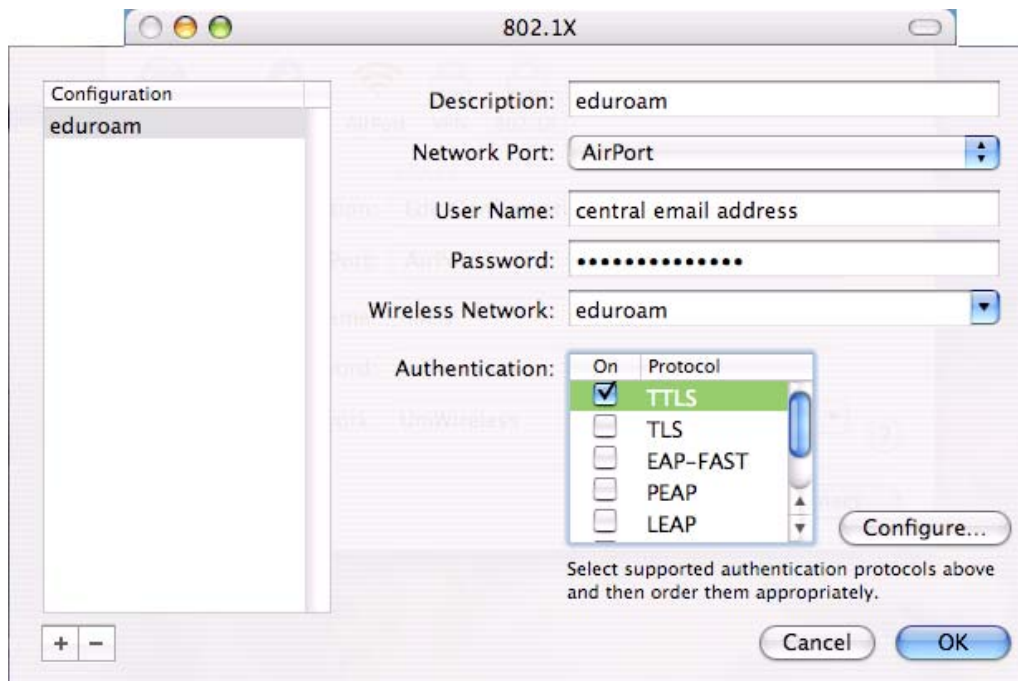
User name: Your **central email address** (eg: username@unimelb.edu.au)

Password: Your **central email password**

Select **eduroam** from the **Wireless Network** drop down menu

From the **Authentication** list ensure that **TTLS** is the only option ticked

Select **TTLS** and click **Configure**

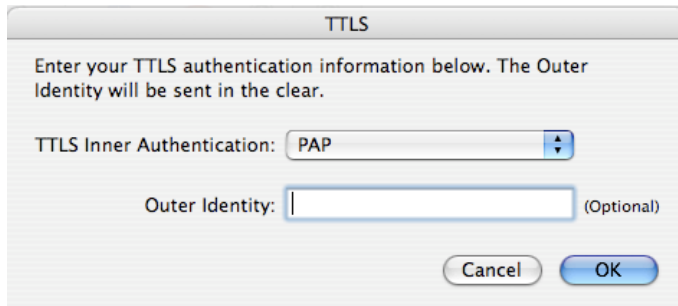


STEP 10:

From the **TTLS Inner Authentication** drop down box select **PAP**

Leave the **Outer Identity** field blank

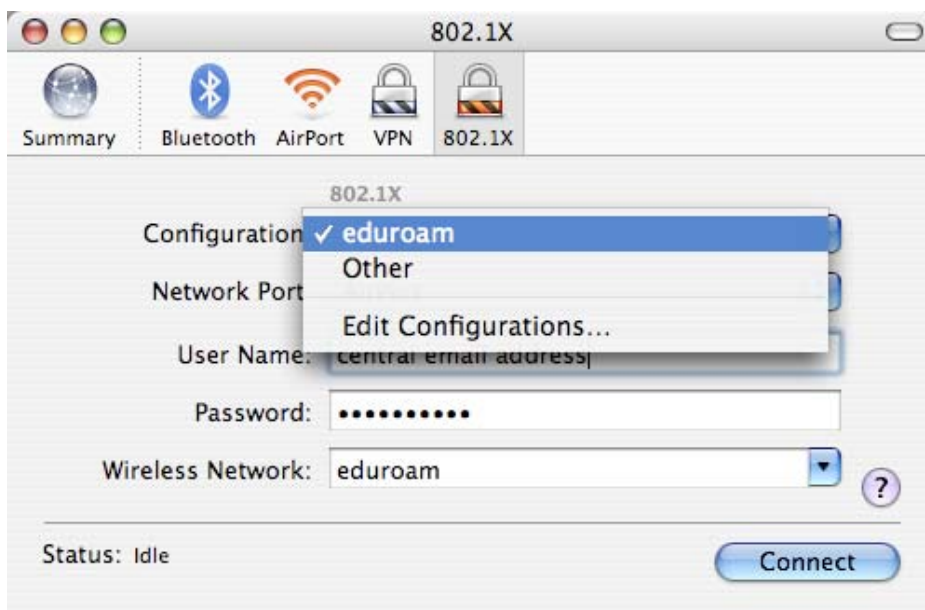
Click **OK** to close the **TTLS** window and click **OK** to close the **802.1X** configuration window



STEP 11:

From the **Configuration** drop down box select the configuration you set up in **STEP 9**

Click **Connect**



The first time you connect to the **eduroam** network, you will be asked to accept certificates. Click **Continue** and you will be connected



WARNING: IT WILL TAKE A MINUTE TO UPDATE THE STATUS