

Installing SecureW2 on Windows Mobile 2003 SE for EduRoam PDA Wireless Network Connectivity

Introduction

This guide will cover how to install and configure the SecureW2 802.1x client on Windows Mobile 2003 SE for EduRoam PDA wireless network connectivity.

For this guide, a HP iPAQ hx2700 series PDA was used. ♦ There may be slight differences from this guide depending on the device used.

For 802.1x authentication the free SecureW2 client is used and is available at the SecureW2 website, <http://www.securew2.com>. ♦ As of this document writing (May 2005) the direct link to the SecureW2 software is

http://www.securew2.com/uk/download/SecureW2_PPC2003_300.zip.

The SecureW2 software also works on Pocket PC 2003 and the general installation and configuration will be the same as listed in this guide, however some of the steps may be different. ♦

SecureW2 will only work on the above mentioned PDA operating system version, it will not work on any other version (ie, Pocket PC 2002, PalmOS).

Installation

Firstly you will need to get the SecureW2 802.1x client for your PDA.

Once you have downloaded the SecureW2 client, extract the zip file to a temporary directory on your PC.

Dock the PDA and establish a Guest Partnership between your PDA and your PC with Microsoft ActiveSync. ♦

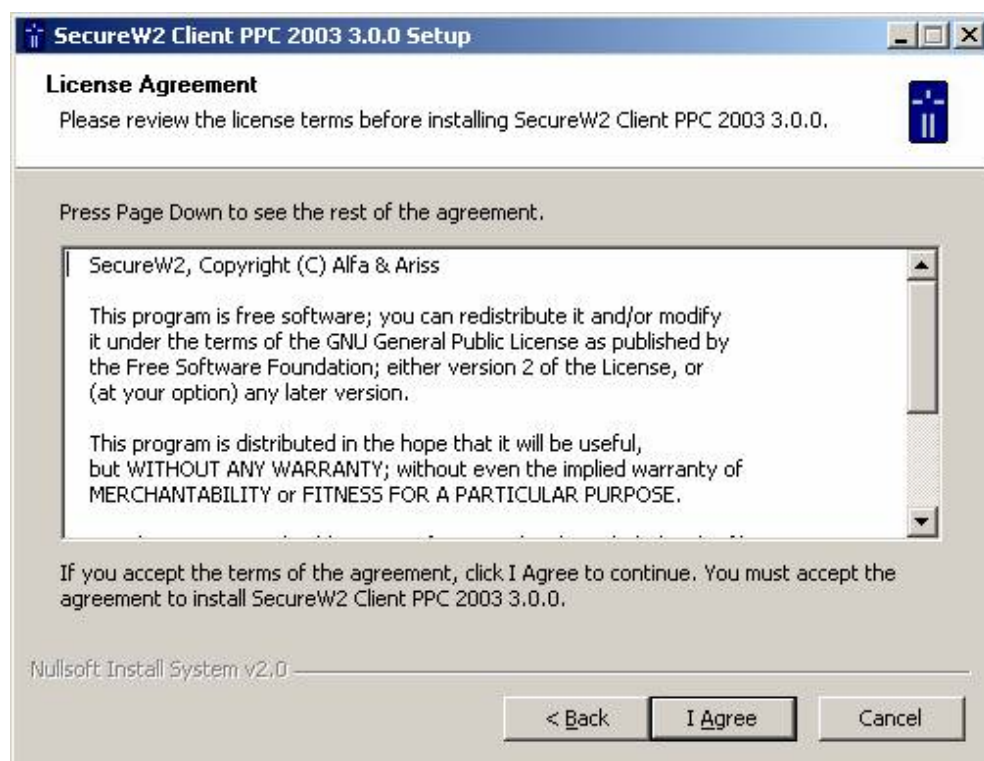
When you have established the relationship, run the executable SecureW2_PPC2003_300.exe from the directory where you extracted the downloaded file on your PC.

You will be presented with the SecureW2 Client PPC 2003 3.0.0 Setup screen.



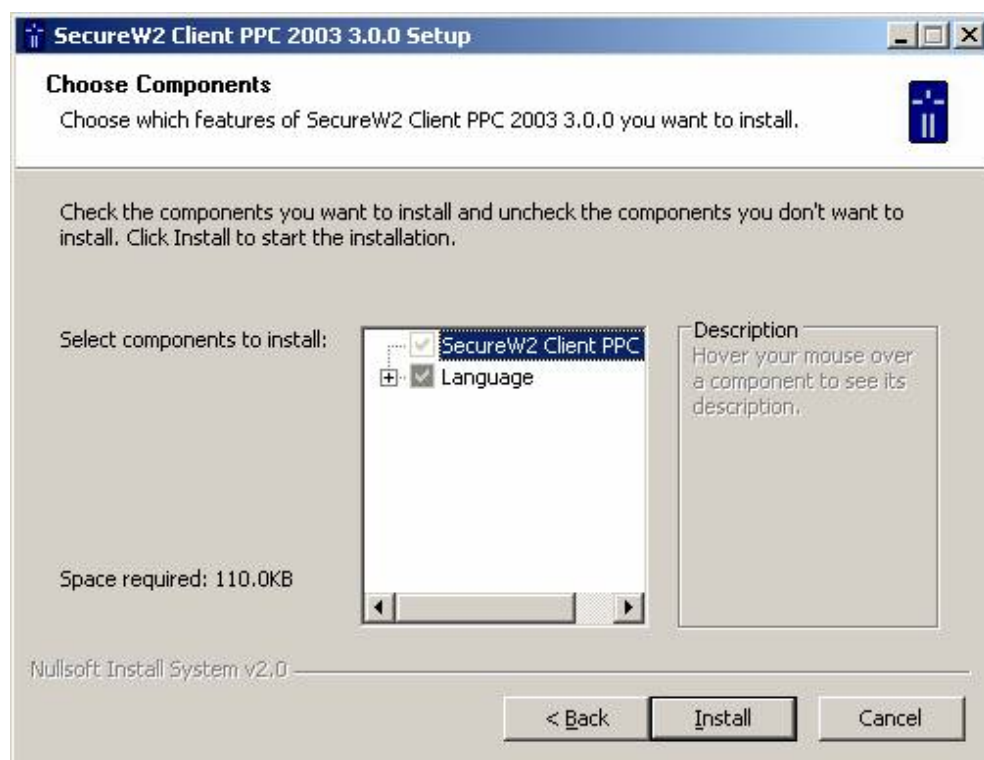
Click Next.

You will be presented with the License Agreement screen.



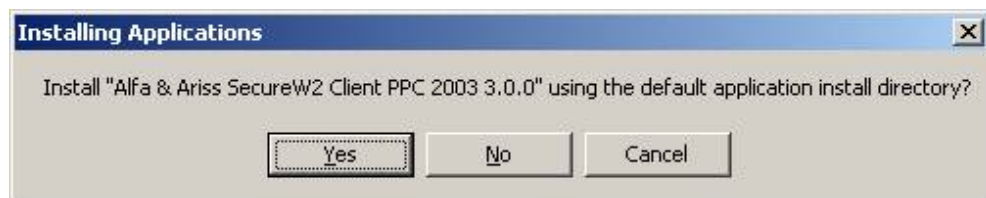
Click I Agree. ♦

You will be presented with the Choose Components screen.



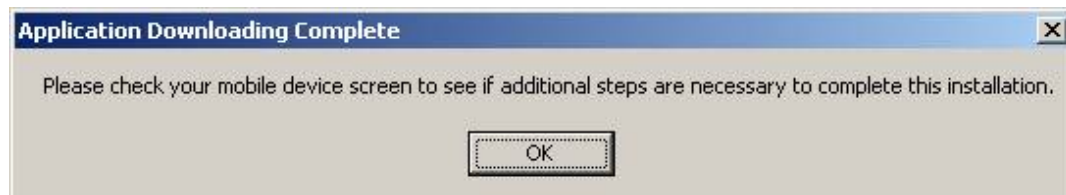
Click Install.

The installation will begin and you will be presented with the Installing Applications dialog box.



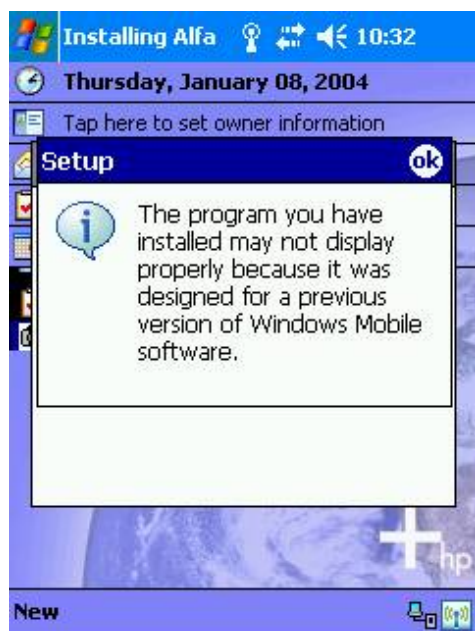
Click Yes.

The installation will install the software on your device and present you with the Application Downloading Complete dialog box.



Click OK.

On your PDA you will now see a Setup dialog box.



Click OK.

The SecureW2 802.1x client should now be installed on your PDA.

Configuration

Now we will configure the client to attach to the EduRoam network.

Click the Start menu and select Settings



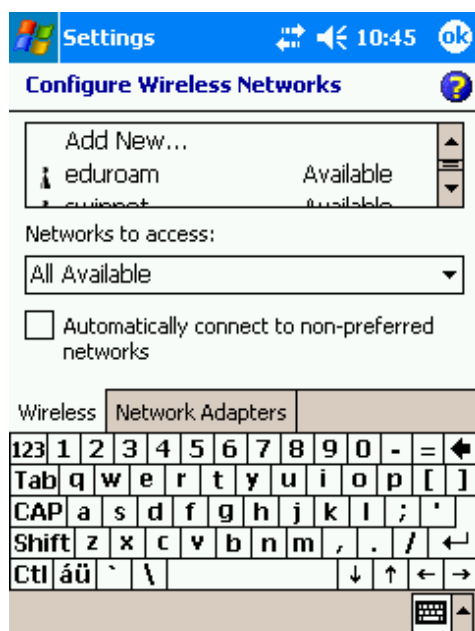
Click Connections tab



Click iPAQ Wireless



Click the WiFi icon to enable your wireless card if it is not already running. Once your wireless card is enabled, click Settings next to the WiFi icon to configure the wireless settings.

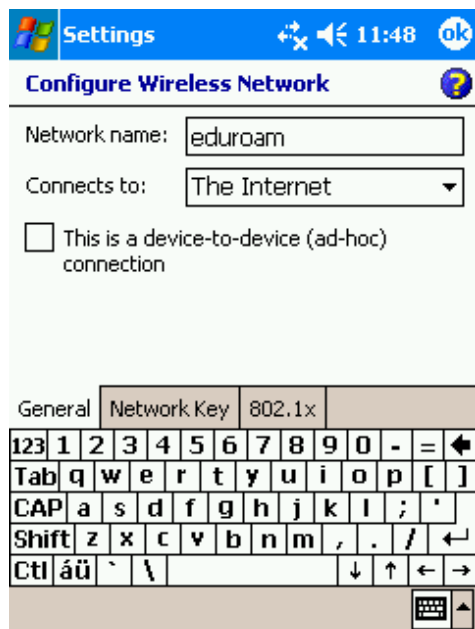


On this screen you will see wireless networks that are available to you currently. As seen in the screen shot above, the "eduroam" wireless network is available so we don't need to create it.

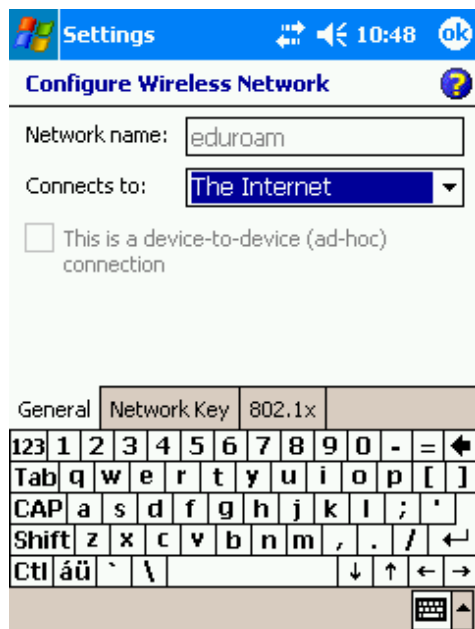
To configure the settings for the "eduroam" network, click on "eduroam".

If you cannot see the eduroam wireless network you need to create the network manually.

You can do this by clicking Add New and entering in the Network Name eduroam.

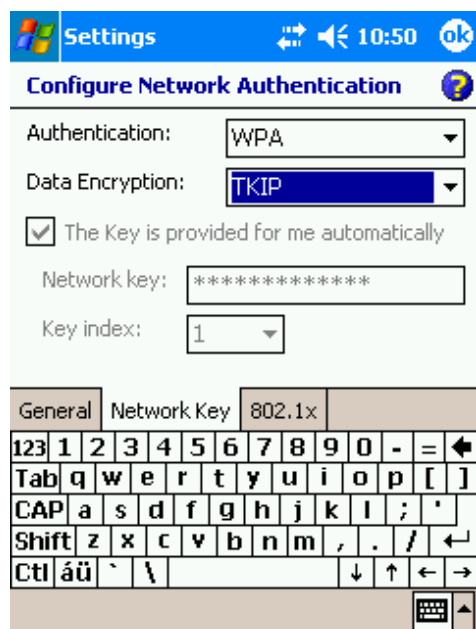


Ensure that for "Connects to:" you have selected "The Internet".



Click the Network Key tab.

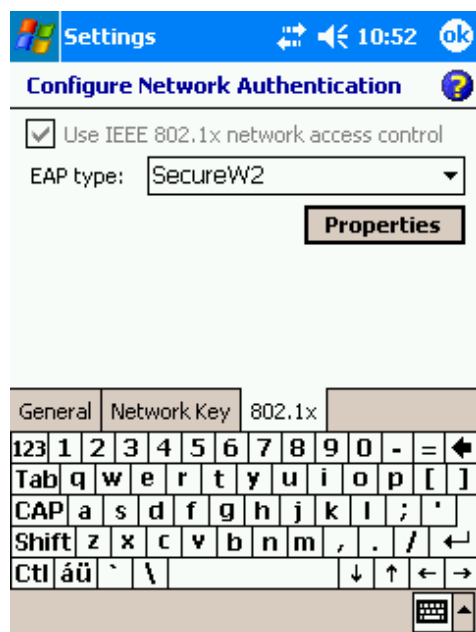
For "Authentication" select "WPA" and for "Data Encryption" select "TKIP", as seen below.



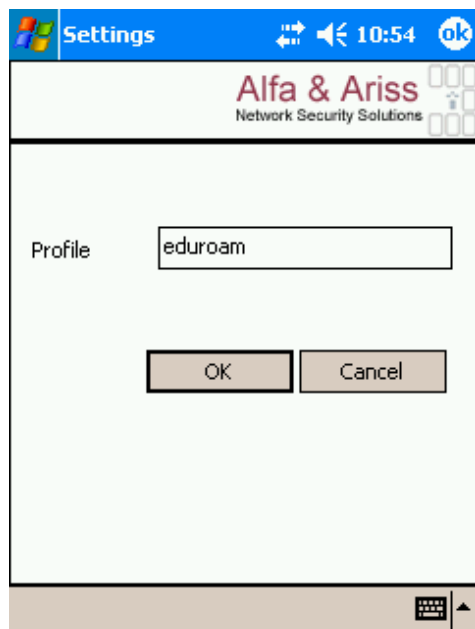
Select the 802.1x tab.

For "EAP Type" select "SecureW2".

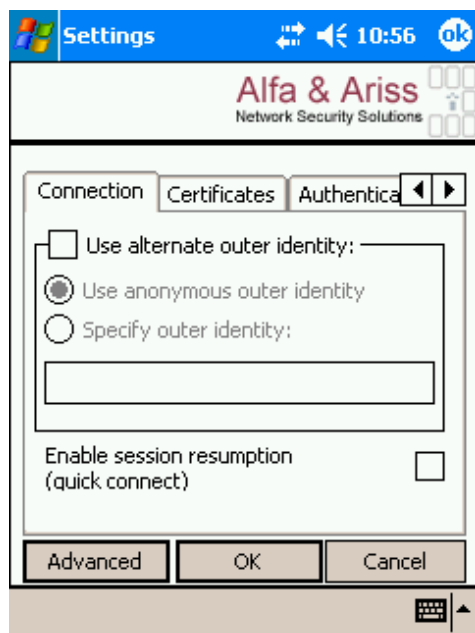
If you do not have the SecureW2 option then the SecureW2 client has not installed on your PDA.



Now select Properties to configure the SecureW2 client settings.
Click New and enter a Profile name of "eduroam".



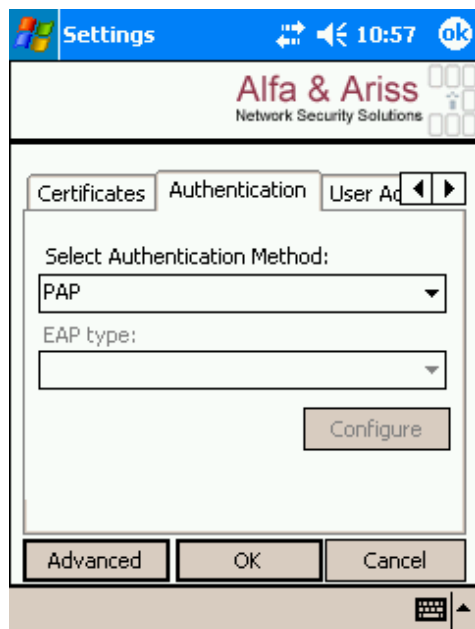
Press OK and you will be presented with the SecureW2 settings screen. ♦ Make sure you uncheck "Use alternate outer identity" in the Connection tab.



Select the Certificates tab and uncheck the "Verify server certificate" option.



Select the Authentication tab and make sure "PAP" is set under "Select Authentication Method".

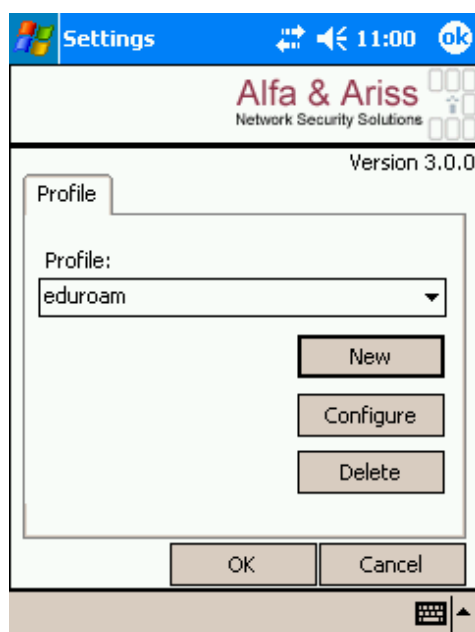


Select the User Account tab. ♦ Select "Prompt user for credentials".

It is HIGHLY recommended that you do not save your user credentials on your PDA device as this presents a security risk. ♦

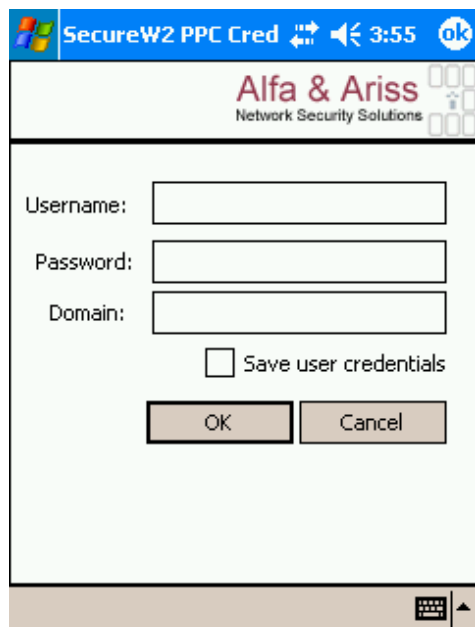


Click OK and you should now be setup to connect to the EduRoam network using the "eduroam" profile you just created.



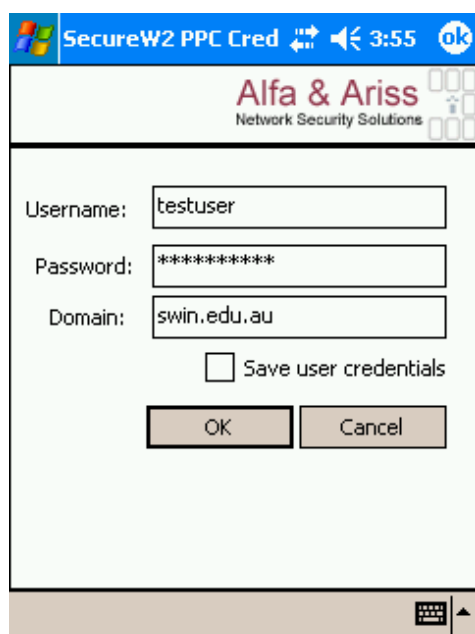
Connecting to the network

When you connect to the EduRoam network, you will be prompted by the 802.1x client to enter your username and password (as seen below):



The image shows a Windows Mobile dialog box titled "SecureW2 PPC Cred". The title bar includes a Windows logo, the title text, and icons for network status, volume, and a clock showing 3:55. The main area has a header for "Alfa & Ariss Network Security Solutions". Below this are three input fields: "Username:", "Password:", and "Domain:". There is an unchecked checkbox labeled "Save user credentials". At the bottom are "OK" and "Cancel" buttons. A keyboard icon is visible in the bottom right corner.

Enter your credentials provided by your institute. ♦ Press OK.



This image shows the same "SecureW2 PPC Cred" dialog box, but with the following values entered: "testuser" in the Username field, "*****" in the Password field, and "swin.edu.au" in the Domain field. The "Save user credentials" checkbox remains unchecked. The "OK" and "Cancel" buttons are at the bottom. The title bar and header information are identical to the previous image.

If you entered in your details correct, you should now be connected to the EduRoam network.

Confirming network connectivity

To confirm that you have connected to the EduRoam network, follow the steps below:

Click the Start Menu and select Settings



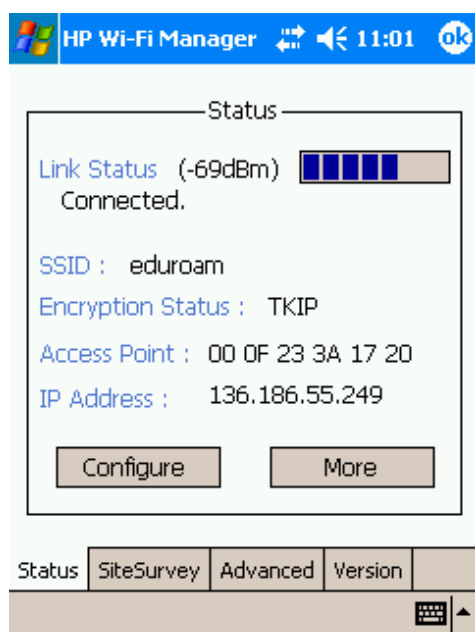
Click the Connections tab



Click iPAQ Wireless



Click Manager next to the WiFi icon
You should now see the HP Wi-Fi Manager Status screen



Under "Link Status" check that it says "Connected" and check that "SSID" is "eduroam".

*Document written by Richard Vanderwaal
Senior Systems Engineer
Swinburne University of Technology
First drafted 4th May 2005.*